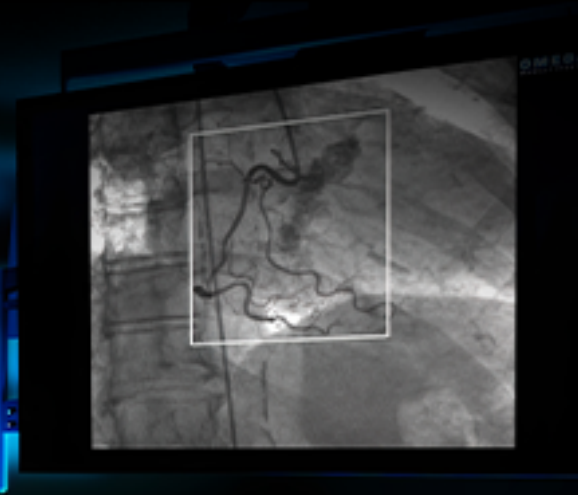




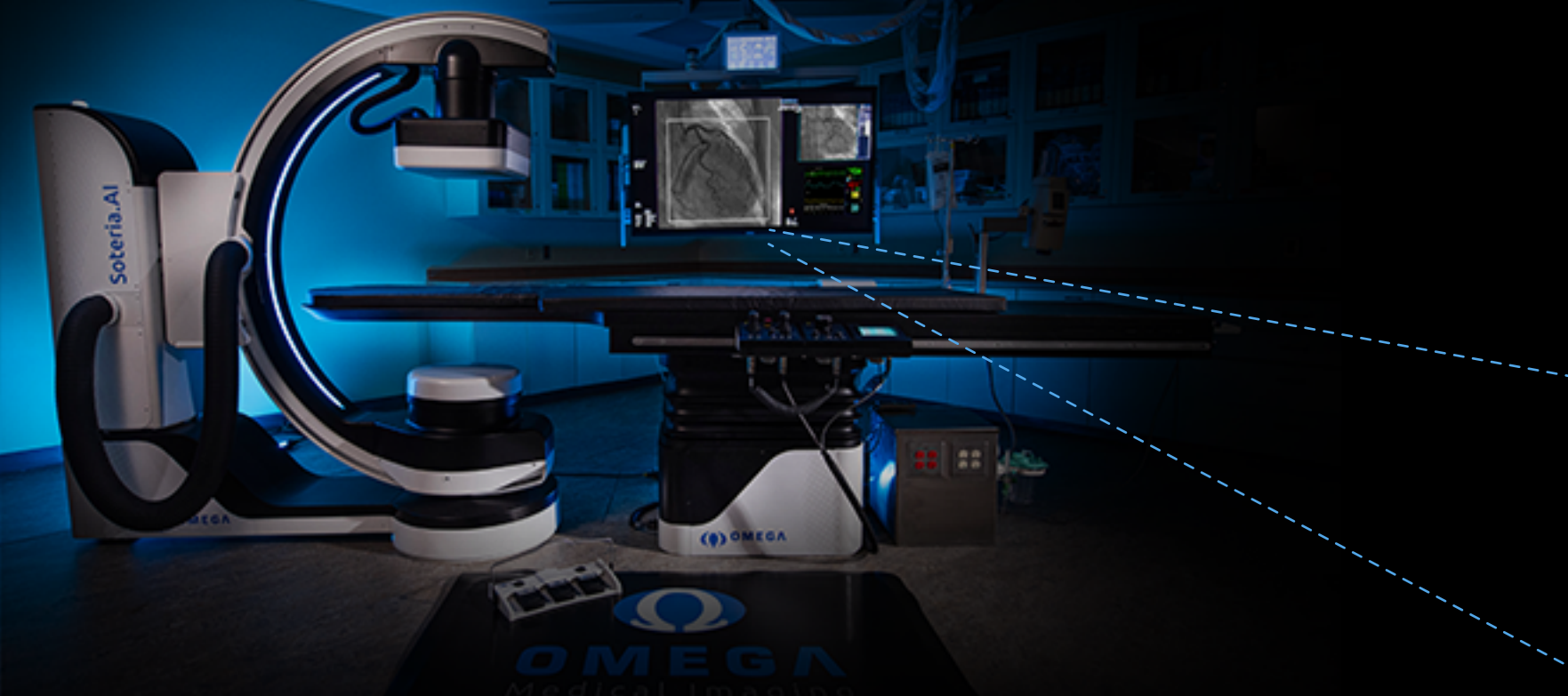
Imaging Beyond Expectations

Changing Your Reality of Radiation Safety –
Reduce Dose by **up to ~84%***



Soteria.AI

AI Image-Guided Cardiovascular Systems



Beyond Expectation is Excellence



State-of-the-Art Image Processing

- Experience unrivaled **image quality** with Nyquist.IQ advanced image processing.
- Newest, most **advanced imaging** system available.
- **Highly responsive** CMOS detector offers advanced feature detectability.
- **Enhanced** visualization of vessels and catheters.

ALARA – As Low as ~~Reasonably~~ Achievable

Shatter Your Expectations.

AI Image-Guided ROI

- Automatically define & manage your region of interest to reach unrivaled **dose reduction**.
- Go beyond filtering and completely **block radiation** with fully automated, rapid collimation.

- Experience **up to 84%** radiation reduction during fluoro and cine acquisitions.
- Spectacular **image quality** inside and out of the ROI.
- **Ultimate protection** for everyone in the room – patient, physician, and staff.



Innovative Design

- Obtain **patient access and angulations** previously reserved for ceiling systems.
- Smaller footprint **saves lab space**.
- **Reduced infrastructure** demands required of cumbersome ceiling-mounted systems.
- **Installation in days**, not months.



About Omega Medical Imaging

Omega is an innovator in the design, manufacture, delivery, and support of the first and only AI image-guided interventional systems for hospitals and healthcare facilities worldwide. AI imaging uses region of interest technology to dramatically reduce radiation exposure to patients and staff far beyond what is possible with conventional systems. Leveraging 30+ years of experience, Omega is disrupting the status quo, helping healthcare partners not just meet, but exceed the quadruple aim.

* Based on dose area studies using FluoroShield™ technology with a predicate Omega device. Actual results may vary.



407-815-4443

[omegamedicalimaging.com](https://www.omegamedicalimaging.com)

0300-0008 Rev 1