

DEL MEDICAL

OTC18^T

OVERHEAD TUBE CRANE SYSTEM
with Synchronized Tracking



System Overview

Clinical Performance

Versatile and intuitive, the OTC18T System delivers enhanced patient comfort and optimized workflow. Precisely designed to withstand high-volume throughput in hospital radiology departments, medical imaging centers and large orthopedic facilities with the need to perform a broad range of radiographic studies.

Our overhead tube crane features a sophisticated LCD touchscreen console, which supports enhanced capabilities to offer a more genuine patient experience. By integrating with a DELWORKS DR System and compatible generator, technologists are given the ability to adjust generator technique factors without leaving the patient's side. Its overhead horizontal and transverse tracks provide technologists with limitless imaging procedure capability, including cross-table laterals and other challenging views.

The system embraces operational efficiency through ergonomically designed user controls, tracking to a selected image receptors, and an industry leading table with a patient weight capacity of up to 800 lbs. The OTC18T System was developed through innovation to produce the highest quality diagnostic images with ease. Built in the USA, it is prepared to deliver many years of continuous use and exceptional user-satisfaction.

System Includes

- ▶ Overhead Tube Crane with Vertical Tracking and Automatic Collimator (Manual Version Available)
- ▶ EV800 Four-Way Elevating Float Top Table
- ▶ VT300 Tilting Wall Stand (VS300 optional)
- ▶ High Frequency Generator
- ▶ DELWORKS DR System

Key Highlights



Technologist-Friendly
LCD Touchscreen



Vertical and SID Tracking
to Table or Wall Stand



Electromagnetic
Braking



Premium Table
and Wall Stand



Integrated Workflow



Fixed and Wireless
DR Detector Options



Dose Management
Configurations



System Features

Intuitive Control and Flexible Positioning

The OTC18T ceiling mounted tube crane highlights an advanced, technologist-friendly touchscreen console providing seamless operation of your radiographic system by displaying tube angulation, SID values, and customizable generator controls. Color-coded movement identification buttons provide optimal precision when setting up views. Peaceful and effortless movements are controlled by an electromagnetic braking system enabling fast and secure readjustments of the tube head. Its five-tier telescoping column delivers exceptional vertical movement of 71" (180 cm), capable of performing complete head-to-toe radiographic procedures including upright weight bearing and recumbent table top exams.



Easy to Use

A conveniently placed all-lock release sensor is located just above the bottom section of the tube head handle. This sensor enables rapid manual positioning by allowing the user to simply grab the bottom handle to unlock the system and make swift readjustments.



Auto-Collimation

Accelerates patient positioning and reduces radiation exposure by automatically selecting the proper field-of-view for each body part. This feature is available through the DelWorks DR acquisition software's pre-programmed APR settings.

Powerful Integration

The OTC18T System is powered by a compact and robust CMDR generator, available in 50, 65 and 80 kW models. The generator is fully integrated with the DelWorks DR Workstation creating a streamlined workflow and enhancing dose efficiency.



23" Touchscreen Monitor



▶ Vertical track to wall stand

Vertical and SID Tracking

Synchronized motorized movement of the tube crane's vertical axis maintains precise centering between the X-ray tube and image receptor. Available functions include vertical tracking to the wall stand, SID tracking to the elevating table, or horizontally positioned wall stand. The result is quick, accurate alignment without the extra time and effort needed to make additional manual adjustments.



▶ SID track to table



▶ SID track to wall stand

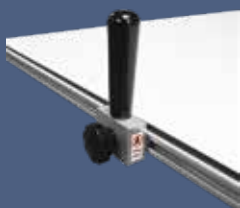
Designed for performance, built for longevity

Elevating Four-way Float Top Table

The durable EV800 elevating four-way float top table delivers outstanding safety and usability. Featuring an exclusive four-point lift system and exceptionally quiet motor-drive, its completely flat, smooth, scratch resistant table top lowers to a height of just 22" to ensure stress-free patient transfers and adjustments. Offering a high patient weight capacity of up to 800lbs (363 kg), stable continuous movement is possible through conveniently placed recessed foot treadles and table-side controls, suitable for increasing technologist performance and satisfaction.



Accessories and Upgrades



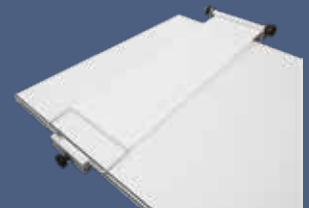
▶ Table Side Handgrips

These sturdy handgrips can be mounted along the entire length of both sides of the table top to enhance patient safety.



▶ Lateral Cassette Holder

This adjustable holder can be mounted along both sides of the table top allowing for access to a variety of cross-table lateral views.



▶ Compression Band

This compression device is used to safely secure patients to the table top.

Tilting Wall Stand

The VT300 wall stand features a tilting image receptor, promoting comfort and precision for standing or seated examinations. Every adjustment is precisely counterbalanced to allow smooth operation with light effort applied by the technologist. This makes the VT300 accommodating to all users regardless of size or strength.



Rotating Tray * optional upgrade

The easy-to-use rotating tray enables manual rotation of the DR detector for use inside both table and wall stand. Stable one-handed operation supports fast portrait-to-landscape positioning without ever removing the detector from the tray. Fully extended steel slides activate locking mechanisms to assure detector protection when loading and unloading. Designed to accommodate a wide array of ISO 14 x 17" cassette-sized detectors.



DR Features

High Quality Images, Reduced Patient Dose

DELWORKS

DELWORKS is a powerful image acquisition and processing software featuring a user-friendly interface that provides sophisticated and speedy medical imaging. Designed with complex system automation, DELWORKS aims to simplify the examination process by making the difficult decisions for you.

Its advanced anatomical programming and image processing algorithms help optimize technologist productivity. DELWORKS strives to minimize human error and unwanted repeat exams to give technologists the highest quality image at a lower dose, with every exposure.

Software Features

- ▶ Pre-exposure display of patient and procedure information, X-ray generator exposure factors, status and control functions integrated in a single display screen
- ▶ Exam-specific image processing algorithms automatically optimize images based on selected patient anatomy
- ▶ Enhanced image processing parameters. APR specific default values and manual adjustment, if desired
- ▶ Image rotation in 90° steps, horizontal mirroring, automatic and manual image cropping to collimated area
- ▶ Easy verification and correction of image laterality and patient orientation

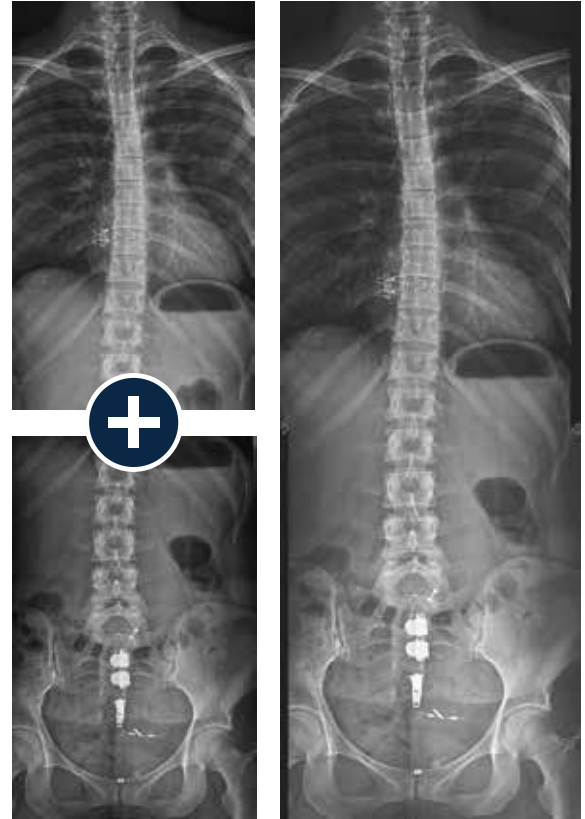


Image Stitching

The optional image stitching application requires no unnecessary preprogramming or additional equipment, making full-length spine studies effortless and accurate.

- ▶ Intuitively add orientation markers and text comments directly to aquired images (pre-defined or free text)
- ▶ Detailed histograms of pixel density
- ▶ User selection of modified LUT (Look-Up Table) based on various exam types
- ▶ Manual adjustment of the LUT, window and level
- ▶ Effectively manage rejected images

Premium Detectors Available in Single, Dual, or Multi-Detector Applications

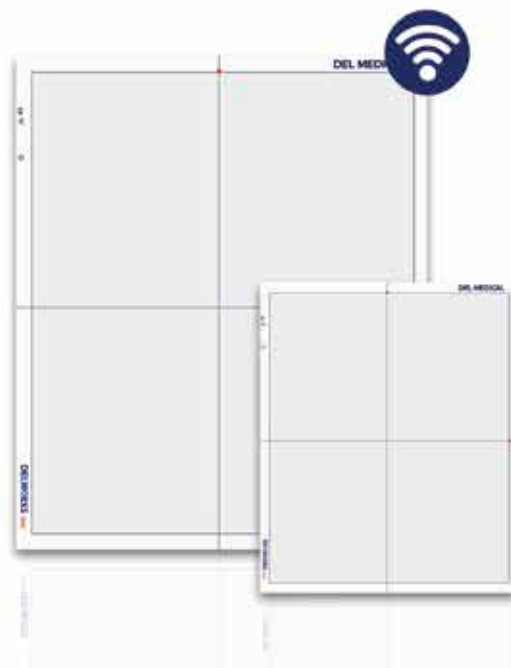
Wireless

E14C

The E14C is an ultra-light, portable 14in x 17in (36cm x 43cm) wireless detector with outstanding image quality, offering the compact versatility needed to optimize workflow. The E14C has an internal accelerometer which automatically senses motion and takes the detector in and out of ready mode, extending its battery life.

E24C

The E24C is a compact 24cm x 30cm version of the E14C detector that is ideal for small anatomy and pediatric imaging.



EasyConnect

DELWORKS E-Series Wireless Detectors feature EasyConnect — an Auto Exposure Detection (AED) technology that keeps the detector in a standby mode, awaiting exposure from any X-ray source. Once an exposure is detected, it instantly captures the X-ray image and transmits it wirelessly to the system workstation.

Fixed

E17C

The E17C fixed, 17in x 17in (43cm x 43cm), large format flat-panel detector is designed to minimize technologist interaction with upright exams in a dual or multi-detector configuration. It is easy to integrate in all types of X-ray systems and delivers both quality images and fast exams, for increased productivity.



Technical Specifications

OTC18T Tube Crane

| | |
|--|---|
| Vertical telescopic travel range: | 70.8" (180 cm) with minimum 32.7" (83 cm) focal spot floor distance with a 9' ceiling height |
| Longitudinal travel range: | Standard 14' rail included, 136.2" min. (346 cm) With optional rail extensions: 219.9" max (558.5 cm) |
| Transverse travel range: | Standard 10' Bridge with 9.8' (0.3 cm) transverse carriage: 86.6" min. (220 cm) With 13' bridge & 13.1' (0.4 cm) transverse carriage: 139.7" max. (355 cm) |
| Longitudinal detent positions: | Configurable during installation |
| Tube rotation range (horizontal axis): | -120°, +120°, Detent positions at -90°, 0°, +90° |
| Tube rotation range (vertical axis): | -182°, +154°, Detent positions at -180°, -90°, 0°, +90° |
| Weight: | Approximately 831 lbs. (377 kg) with tube & collimator |
| Power requirements: | 110/240 VAC 50/60 Hz, 700 VA |

EV800 Radiographic Table

| | |
|------------------------|---|
| Patient load capacity: | 800 lbs. (363 kg) |
| Table base length: | 53" (135 cm) |
| Table base width: | 25" (64 cm) |
| Table top movement: | Longitudinal, ± 21.25" (54 cm) Transverse, ± 4.5" (11.4 cm) |
| Variable height: | 22.25" (56.5 cm) to 34.25" (87 cm) |
| Bucky travel: | ± 8.5" (22 cm) |
| Table top length: | 86.5" (220 cm) |
| Table top width: | 36" (91 cm) |
| Weight: | 563 lbs. (256 kg) |
| Power requirements: | 120 VAC or 230/240 VAC |
| Options: | 78" (198 cm) table top length / 32" (81 cm) table top width / Lateral cassette holder / Table-side patient handgrips / Rotating cassette tray |

VT300 Wall Stand

| | |
|---|--|
| Receptor tilt range: | +90° / 20° |
| Vertical travel range, vertical receptor: | 15.5" (39.4 cm) to 71.1" (180.6 cm) |
| Vertical travel range, +90° receptor: | Minimum 25.5" (64.8 cm) |
| Height: | 83.1" (211 cm) |
| Depth, vertical receptor: | 30" (76 cm) |
| Receptor width: | 24.6" (62.5 cm) |
| Receptor height: | 26.5" (67.3 cm) |
| Weight: | 765.5 lbs. (347.2 kg) |
| Weight, without counterweights: | 368.5 lbs. (167 kg) |
| Power requirements: | 120 VAC or 230/240 VAC 50/60 Hz |
| Options: | 8" (20 cm) extension box / Overhead patient handgrips / Rotating cassette tray |